





PLANTA DE LOCAÇÃO

escala 1:50

Nome	Vigas	
	Serção (cm)	Nível (cm)
V1	15,35	0
V2	15,35	0
V3	15,35	0
V4	15,35	0
V5	15,35	0
V6	15,35	0
V7	15,35	0
V8	15,35	0
V9	15,35	0
V10	15,35	0
V11	15,35	0
V12	15,35	0
V13	15,35	0
V14	15,30	0
V15	15,35	0
V16	15,30	0

Características dos materiais	
Isk	Ecos
(kg/lcm ³)	(kg/lcm ³)
250	238000

Legenda dos Pilares	
	Pilar que morre
	Pilar que passa
	Pilar que nasce
	Pilar com mudança de sexo

None	Partial	Full
None	Small	Large
(cm)	(cm)	(mm)
P1	15 × 40	0
P2	15 × 40	0
P3	15 × 40	0
P4	15 × 40	0
P5	15 × 40	0
P6	15 × 40	0
P7	20 × 40	0
P8	15 × 40	0
P9	15 × 40	0
P10	15 × 40	0
P11	50 × 35	0
P12	15 × 40	0
P13	15 × 40	0
P14	15 × 40	0
P15	15 × 40	0
P16	15 × 40	0
P17	15 × 40	0
P18	20 × 40	0
P19	15 × 40	0
P20	15 × 40	0
P21	15 × 40	0
P22	15 × 40	0
P23	15 × 40	0
P24	15 × 40	0
P25	15 × 40	0
P26	15 × 40	0
P27	15 × 40	0

P20	10 x 40	0	0
P27	16 x 40	0	0
P28	15 x 40	0	0

APROVAÇÃO

INOVE
PROJETOS E CONSTRUÇÕES LTDA

CONTEÚDO :
PLANTA DE LOCAÇÃO - HSP-EST-LOR-F01-R00

PRAÇA JOSÉ CAMILO FRAGA, CENTRO, MIRADOURO-MG - CEP 36.893-000

PREFEITURA MUNICIPAL DE MIRADOURO-MG - CNPJ 17947623/0001-79

AUTOR PROJETO

INOVE PROJETOS E CONSTRUÇÕES LTDA - CREA NACIONAL: 0001097664 - CNPJ: 43.695.063/0001-93

RESP. TÉCNICO

CONTEÚDO

PLANTA DE LOCAÇÃO RAMPA

blind

ÁREAS:
ÁREA DO TERRENO: 2.146,44 m²
ÁREA TOTAL CONSTRUIDA (INICIAL): 1.475,07 m²
ÁREA TOTAL A CONSTRUIR: 448,40 m²
ÁREA TOTAL CONSTRUIDA (FINAL): 1.924,07 m²

Bohr.

DESENHO

VIVIANE LINH

ESCALAS:

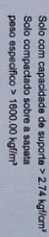
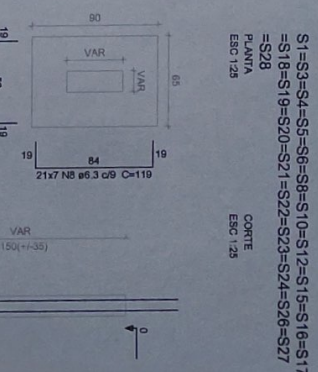
INDICADAS

DATA:

PRAANCHHA

MODIFICAÇÃO	DATA MODIF.	DATA MODIF.	DATA MODIF.	OBS:
COORDENADAS GEOGRÁFICAS: 20°27'26" S, 47°29'47" W				

01/11



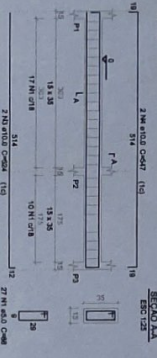
S1=S3=S4=S5=S6=S8=S10=S12=S15=S16=S17
=S18=S19=S20=S21=S22=S23=S24=S26=S27
=S28
PLANTA
ESC 125
CORTE
ESC 125

De Rosa.

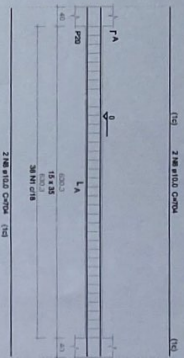
INOVE
PROJETOS E CONSTRUÇÕES LTDA

VIGAS BALDRAMES

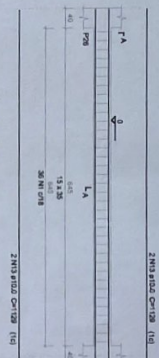
V1
EBC 130



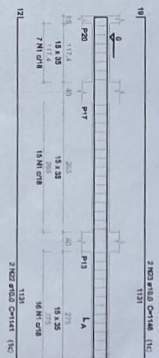
V6
EBC 130



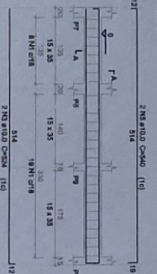
V9
EBC 130



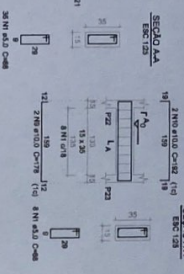
V12
EBC 130



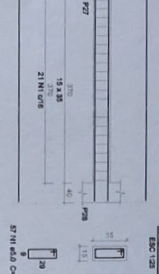
V2
EBC 130



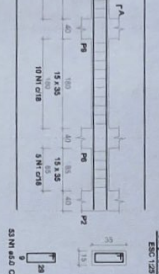
V7
EBC 130



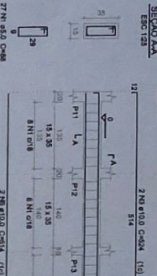
V10
EBC 130



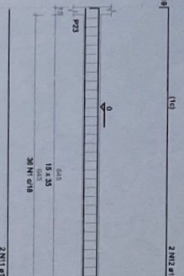
V13
EBC 130



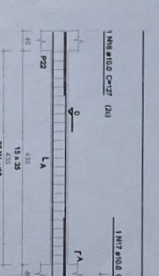
V3
EBC 130



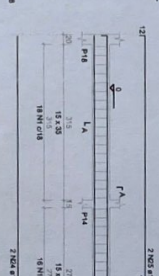
V8
EBC 130



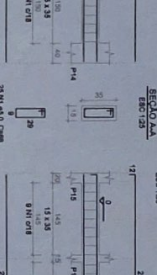
V11
EBC 130



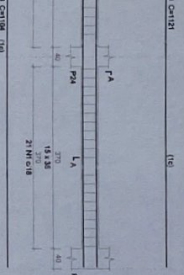
V14
EBC 130



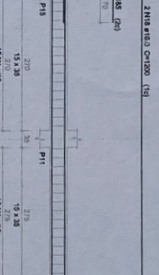
V4
EBC 130



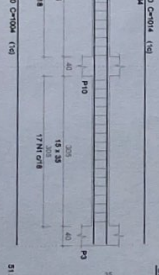
V5
EBC 130



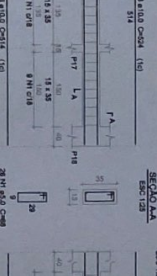
V15
EBC 130



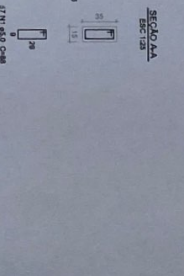
V16
EBC 130



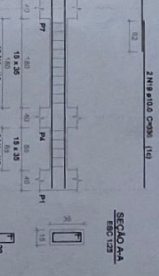
V17
EBC 130



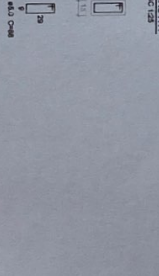
V18
EBC 130



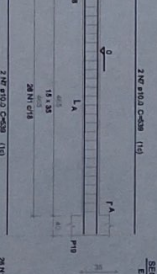
V19
EBC 130



V20
EBC 130



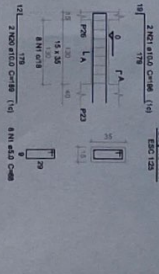
V21
EBC 130



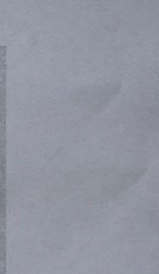
V22
EBC 130



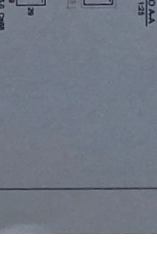
V23
EBC 130



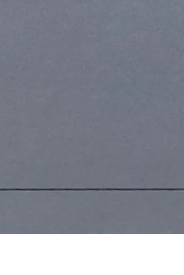
V24
EBC 130



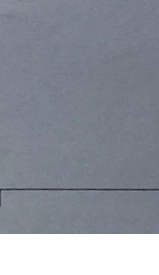
V25
EBC 130



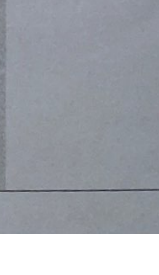
V26
EBC 130



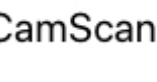
V27
EBC 130



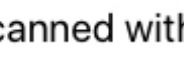
V28
EBC 130



V29
EBC 130



V30
EBC 130



V31
EBC 130



V32
EBC 130



V33
EBC 130



V34
EBC 130



V35
EBC 130



V36
EBC 130



V37
EBC 130

V38
EBC 130

V39
EBC 130

V40
EBC 130

V41
EBC 130

V42
EBC 130

V43
EBC 130

V44
EBC 130

V45
EBC 130

V46
EBC 130

V47
EBC 130

V48
EBC 130

V49
EBC 130

V50
EBC 130

V51
EBC 130

V52
EBC 130

V53
EBC 130

V54
EBC 130

V55
EBC 130

V56
EBC 130

V57
EBC 130

V58
EBC 130

V59
EBC 130

V60
EBC 130

V61
EBC 130

V62
EBC 130

V63
EBC 130

V64
EBC 130

V65
EBC 130

V66
EBC 130

V67
EBC 130

V68
EBC 130

V69
EBC 130

V70
EBC 130

V71
EBC 130

V72
EBC 130

V73
EBC 130

V74
EBC 130

V75
EBC 130

V76
EBC 130

V77
EBC 130

V78
EBC 130

V79
EBC 130

V80
EBC 130

V81
EBC 130

V82
EBC 130

V83
EBC 130

V84
EBC 130

V85
EBC 130

V86
EBC 130

V87
EBC 130

V88
EBC 130

V89
EBC 130

V90
EBC 130

V91
EBC 130

V92
EBC 130

V93
EBC 130

V94
EBC 130

V95
EBC 130

V96
EBC 130

V97
EBC 130

V98
EBC 130

V99
EBC 130

V100
EBC 130

V101
EBC 130

V102
EBC 130

V103
EBC 130

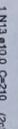
V104
EBC 130

V105
EBC 130

V106
EBC 130



ESC 1:5



2 M 12



ACC	N	DIAM	Q	UNIT	C TOTAL
CAN0	2	5.0	253	86	22264
	1	6.3	1	126	7920
	2	7.6	1	210	17640
	3	9.0	1	324	27000
	4	10.0	6	547	3282
	5	10.0	2	524	1046
	6	10.0	2	354	646
	7	10.0	2	327	714
	8	10.0	2	198	396
	9	10.0	2	522	566
	10	10.0	2	506	506
	11	10.0	2	1032	2564
	12	10.0	2	1039	2018
	13	10.0	1	2101	2101
	14	10.0	1	1081	2122
	15	10.0	2	1037	2017
	16	10.0	2	1157	2077

ACO	DIAM	C.TOTAL (m)	PESO + 10 % (kg)
CASO	6,3	1,3	0,3
CASO	10,0	211,8	143,6
CASO	5,0	222,7	37,7
PESO TOTAL			
CASO	144		
CASO	37,7		

Vol. de concreto total (C-25) = 2.69 m³
Área de forma total = 43.48 m²

Prasad

PSA

CONTEÚDO:
VIGAS SUPERIORES

ÁREAS:
ÁREA DO TERRENO: 2.148,44 m²

AREA TOTAL CONSTRUIDA (INICIAL): 1.475,67 m²
AREA TOTAL A CONSTRUIR: 448,40 m²
AREA TOTAL CONSTRUIDA (FINAL): 1.924,07 m²

VIGAS TÉRREO - HSP-EST-VSU-F05-R00

ENDEREGO :

PROPRIETARIO: _____

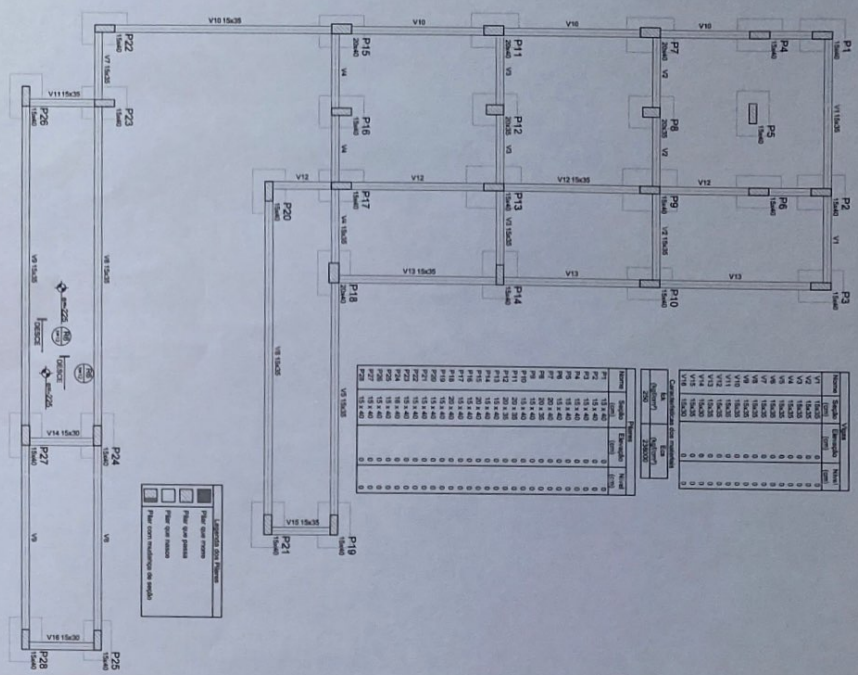
AUTOR PROJETO:

RESP. TÉCNICO:

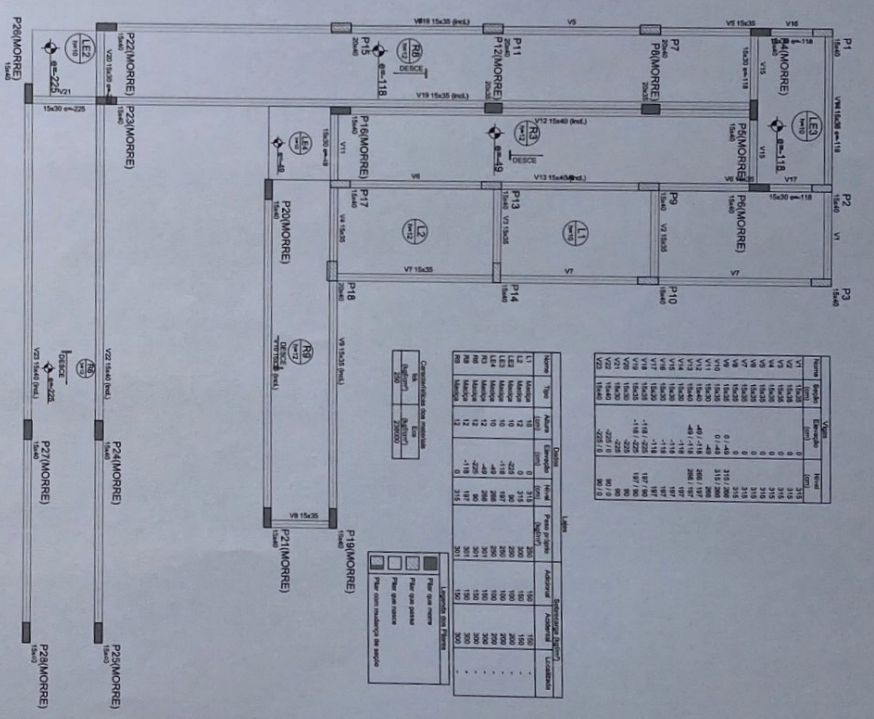
DESENHO:	ESCALAS:	DATA:
VIVIANE LIMA	INDICADAS	10/03/202

05/11

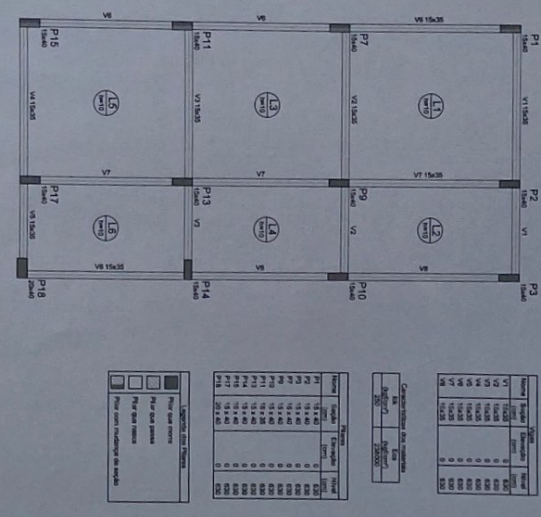
MODIFICACAO	DATA MODIF.	DATA MODIF.	DATA MODIF.	USO:
				COORDENADAS GEOGRAFICAS: 20°53'23.87S 42°20'41.27W



FORMA PAV. FUNDAÇÃO
escala: 1:50



FORMA PAV. TERREO
escala: 1:50



FORMA PAV. SUPERIOR

Item	Tip	Quantidade	Medida	Valor unit.	Valor total
1	1	1	1	1	1
2	2	2	2	2	2
3	3	3	3	3	3
4	4	4	4	4	4
5	5	5	5	5	5
6	6	6	6	6	6
7	7	7	7	7	7
8	8	8	8	8	8
9	9	9	9	9	9
10	10	10	10	10	10
11	11	11	11	11	11
12	12	12	12	12	12
13	13	13	13	13	13
14	14	14	14	14	14
15	15	15	15	15	15
16	16	16	16	16	16
17	17	17	17	17	17
18	18	18	18	18	18
19	19	19	19	19	19
20	20	20	20	20	20
21	21	21	21	21	21
22	22	22	22	22	22
23	23	23	23	23	23
24	24	24	24	24	24
25	25	25	25	25	25
26	26	26	26	26	26
27	27	27	27	27	27
28	28	28	28	28	28
29	29	29	29	29	29
30	30	30	30	30	30
31	31	31	31	31	31
32	32	32	32	32	32
33	33	33	33	33	33
34	34	34	34	34	34
35	35	35	35	35	35
36	36	36	36	36	36
37	37	37	37	37	37
38	38	38	38	38	38
39	39	39	39	39	39
40	40	40	40	40	40
41	41	41	41	41	41
42	42	42	42	42	42
43	43	43	43	43	43
44	44	44	44	44	44
45	45	45	45	45	45
46	46	46	46	46	46
47	47	47	47	47	47
48	48	48	48	48	48
49	49	49	49	49	49
50	50	50	50	50	50
51	51	51	51	51	51
52	52	52	52	52	52
53	53	53	53	53	53
54	54	54	54	54	54
55	55	55	55	55	55
56	56	56	56	56	56
57	57	57	57	57	57
58	58	58	58	58	58
59	59	59	59	59	59
60	60	60	60	60	60
61	61	61	61	61	61
62	62	62	62	62	62
63	63	63	63	63	63
64	64	64	64	64	64
65	65	65	65	65	65
66	66	66	66	66	66
67	67	67	67	67	67
68	68	68	68	68	68
69	69	69	69	69	69
70	70	70	70	70	70
71	71	71	71	71	71
72	72	72	72	72	72
73	73	73	73	73	73
74	74	74	74	74	74
75	75	75	75	75	75
76	76	76	76	76	76
77	77	77	77	77	77
78	78	78	78	78	78
79	79	79	79	79	79
80	80	80	80	80	80
81	81	81	81	81	81
82	82	82	82	82	82
83	83	83	83	83	83
84	84	84	84	84	84
85	85	85	85	85	85
86	86	86	86	86	86
87	87	87	87	87	87
88	88	88	88	88	88
89	89	89	89	89	89
90	90	90	90	90	90
91	91	91	91	91	91
92	92	92	92	92	92
93	93	93	93	93	93
94	94	94	94	94	94
95	95	95	95	95	95
96	96	96	96	96	96
97	97	97	97	97	97
98	98	98	98	98	98
99	99	99	99	99	99
100	100	100	100	100	100



PROJETOS E CONSTRUÇÕES LTDA

FORMAS RAMPA - HSP-EST-FRP-F06-F00

PRACA JOSE CAMILO FRAGA, CENTRO, MIRADOURO ANG - CEP 36.885-000

PROFESSOR: [Name]

PROFESSOR: [Name]

PROFESSOR: [Name]

PROFESSOR: [Name]

PROFESSOR: [Name]

PROFESSOR: [Name]

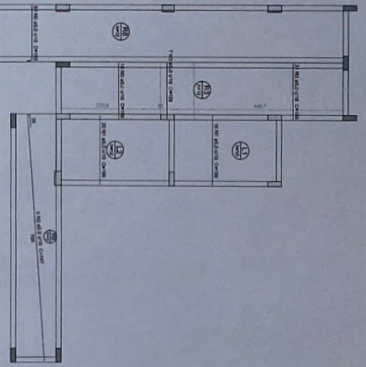
PROFESSOR: [Name]

PROFESSOR: [Name]

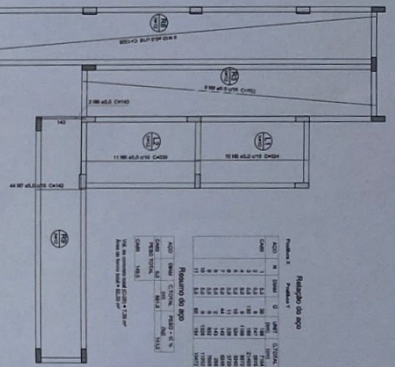
PROFESSOR: [Name]

Handwritten signature and date: 06/11

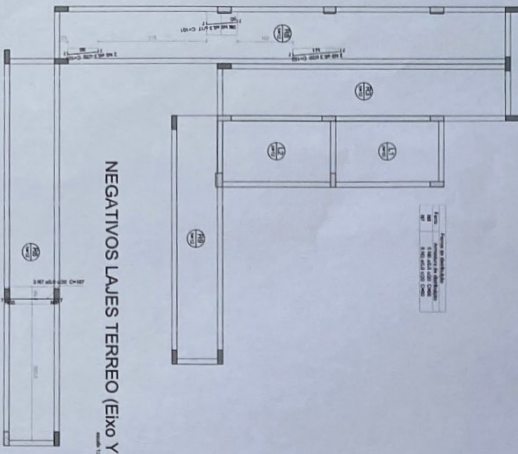
06/11



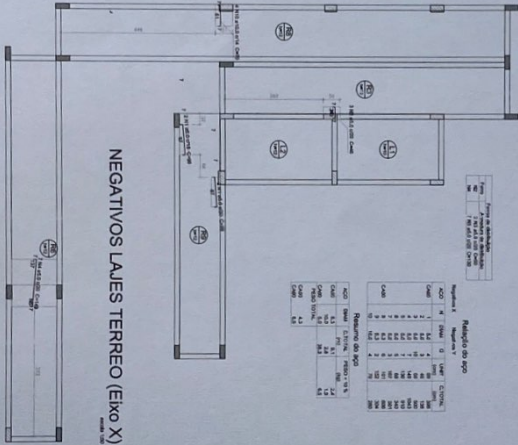
POSITIVOS LAJES TERREO (Eixo X)



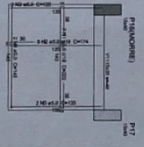
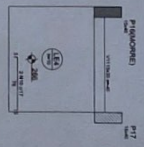
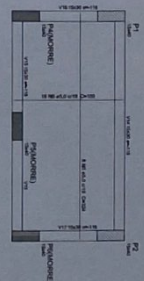
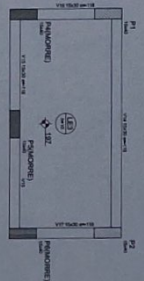
POSITIVO LAJES TERREO (Eixo Y)



NEGATIVOS LAJES TERREO (Eixo Y)



NEGATIVOS LAJES TERREO (Eixo X)



Armação negativa E1

Armação positiva E1

Resumo do aço

Item	Descrição	Quantidade (kg)
1	Aço para lajes	12.345
2	Aço para vigas	5.678
3	Aço para pilares	3.456
4	Aço para detalhes	1.234
Total	Total do aço	22.713

INOVE
PROJETOS E CONTRAÇÕES LTDA

LAJES PAV. - HSP-EST-UP-707-400

PROJ. JOSÉ CARLOS PAVIA CENTRO ARMAÇONADO - CEP 98.800-000

PROJ. JOSÉ CARLOS PAVIA CENTRO ARMAÇONADO - CEP 98.800-000

PROJ. JOSÉ CARLOS PAVIA CENTRO ARMAÇONADO - CEP 98.800-000

PROJ. JOSÉ CARLOS PAVIA CENTRO ARMAÇONADO - CEP 98.800-000

PROJ. JOSÉ CARLOS PAVIA CENTRO ARMAÇONADO - CEP 98.800-000

PROJ. JOSÉ CARLOS PAVIA CENTRO ARMAÇONADO - CEP 98.800-000

PROJ. JOSÉ CARLOS PAVIA CENTRO ARMAÇONADO - CEP 98.800-000

PROJ. JOSÉ CARLOS PAVIA CENTRO ARMAÇONADO - CEP 98.800-000

PROJ. JOSÉ CARLOS PAVIA CENTRO ARMAÇONADO - CEP 98.800-000

VIGAS SUPERIOR

V1
ESC 1:30

SEÇÃO AA
ESC 1:25

V2
ESC 1:30

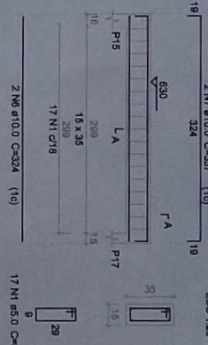
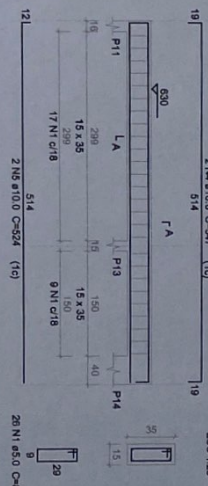
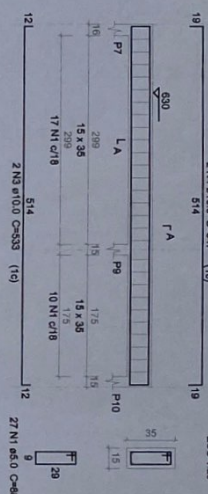
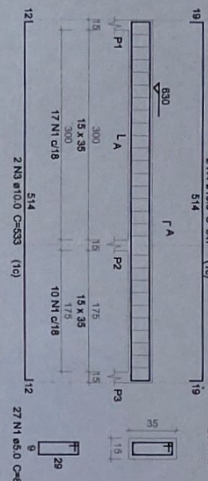
SEÇÃO AA
ESC 1:25

V3
ESC 1:30

SEÇÃO AA
ESC 1:25

V4
ESC 1:30

SEÇÃO AA
ESC 1:25

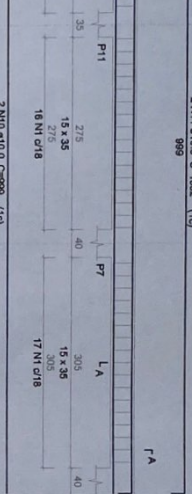
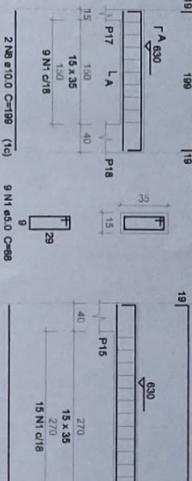


V5
ESC 1:30

SEÇÃO AA
ESC 1:25

V6
ESC 1:30

SEÇÃO AA
ESC 1:25



V7
ESC 1:30

SEÇÃO AA
ESC 1:25

Relação do aço

AÇO	N	DIAM	Q	UNIT	C TOTAL
CA60	1	5.0	253	89	22284
CA60	2	6.3	1	128	126
CA60	3	10.0	4	523	2132
CA60	4	10.0	4	523	2132
CA60	5	10.0	2	261	1066
CA60	6	10.0	2	261	1066
CA60	7	10.0	2	357	1448
CA60	8	10.0	2	357	1448
CA60	9	10.0	2	357	1448
CA60	10	10.0	2	357	1448
CA60	11	10.0	2	357	1448
CA60	12	10.0	2	357	1448
CA60	13	10.0	2	357	1448
CA60	14	10.0	2	357	1448
CA60	15	10.0	2	357	1448
CA60	16	10.0	2	357	1448
CA60	17	10.0	2	357	1448
CA60	18	10.0	2	357	1448
CA60	19	10.0	2	357	1448
CA60	20	10.0	2	357	1448
CA60	21	10.0	2	357	1448
CA60	22	10.0	2	357	1448
CA60	23	10.0	2	357	1448
CA60	24	10.0	2	357	1448
CA60	25	10.0	2	357	1448
CA60	26	10.0	2	357	1448
CA60	27	10.0	2	357	1448
CA60	28	10.0	2	357	1448
CA60	29	10.0	2	357	1448
CA60	30	10.0	2	357	1448
CA60	31	10.0	2	357	1448
CA60	32	10.0	2	357	1448
CA60	33	10.0	2	357	1448
CA60	34	10.0	2	357	1448
CA60	35	10.0	2	357	1448
CA60	36	10.0	2	357	1448
CA60	37	10.0	2	357	1448
CA60	38	10.0	2	357	1448
CA60	39	10.0	2	357	1448
CA60	40	10.0	2	357	1448
CA60	41	10.0	2	357	1448
CA60	42	10.0	2	357	1448
CA60	43	10.0	2	357	1448
CA60	44	10.0	2	357	1448
CA60	45	10.0	2	357	1448
CA60	46	10.0	2	357	1448
CA60	47	10.0	2	357	1448
CA60	48	10.0	2	357	1448
CA60	49	10.0	2	357	1448
CA60	50	10.0	2	357	1448
CA60	51	10.0	2	357	1448
CA60	52	10.0	2	357	1448
CA60	53	10.0	2	357	1448
CA60	54	10.0	2	357	1448
CA60	55	10.0	2	357	1448
CA60	56	10.0	2	357	1448
CA60	57	10.0	2	357	1448
CA60	58	10.0	2	357	1448
CA60	59	10.0	2	357	1448
CA60	60	10.0	2	357	1448
CA60	61	10.0	2	357	1448
CA60	62	10.0	2	357	1448
CA60	63	10.0	2	357	1448
CA60	64	10.0	2	357	1448
CA60	65	10.0	2	357	1448
CA60	66	10.0	2	357	1448
CA60	67	10.0	2	357	1448
CA60	68	10.0	2	357	1448
CA60	69	10.0	2	357	1448
CA60	70	10.0	2	357	1448
CA60	71	10.0	2	357	1448
CA60	72	10.0	2	357	1448
CA60	73	10.0	2	357	1448
CA60	74	10.0	2	357	1448
CA60	75	10.0	2	357	1448
CA60	76	10.0	2	357	1448
CA60	77	10.0	2	357	1448
CA60	78	10.0	2	357	1448
CA60	79	10.0	2	357	1448
CA60	80	10.0	2	357	1448
CA60	81	10.0	2	357	1448
CA60	82	10.0	2	357	1448
CA60	83	10.0	2	357	1448
CA60	84	10.0	2	357	1448
CA60	85	10.0	2	357	1448
CA60	86	10.0	2	357	1448
CA60	87	10.0	2	357	1448
CA60	88	10.0	2	357	1448
CA60	89	10.0	2	357	1448
CA60	90	10.0	2	357	1448
CA60	91	10.0	2	357	1448
CA60	92	10.0	2	357	1448
CA60	93	10.0	2	357	1448
CA60	94	10.0	2	357	1448
CA60	95	10.0	2	357	1448
CA60	96	10.0	2	357	1448
CA60	97	10.0	2	357	1448
CA60	98	10.0	2	357	1448
CA60	99	10.0	2	357	1448
CA60	100	10.0	2	357	1448

Resumo do aço

AÇO	DIAM	C TOTAL	PESO + 10 %
CA60	6.3	1.3	0.3
CA60	10.0	211.8	143.6
CA60	5.0	222.7	37.7
CA60	14.4		
CA60	37.7		

Vol. de concreto (C-25) = 2.69 m³
Área de forma total = 43.46 m²



CONTEÚDO:
VIGAS TÉRREO - HSP-EST-VSU-F08-R00

PROJETO:
PRAÇA JOSÉ CAMILO FRAGA, CENTRO, MIRADOURO-MG - CEP 36.893-000

PROPRIETÁRIO:
PREFEITURA MUNICIPAL DE MIRADOURO-MG - CNPJ 17.912.300/0001-79

PROJETO:
INOVE PROJETOS E CONSTRUÇÕES LTDA - CREA NACIONAL: 0001/087864 - CNPJ: 23.895.083/0001-48

RESP. TÉCNICO:

CONTEÚDO:
VIGAS SUPERIOR

ÁREAS:
ÁREA DO TERRENO: 2.146.44 m²
ÁREA TOTAL CONSTRUÍDA (ENCAL): 1.475.67 m²
ÁREA TOTAL A CONSTRUIR: 448.40 m²
ÁREA TOTAL CONSTRUÍDA (FUAL): 1.524.07 m²

DESENHO:
VIVIANE LIMA
MODIFICAÇÃO:
DATA: 10/03/2022
PRÓXIMO:
08/11

APROVAÇÃO:

